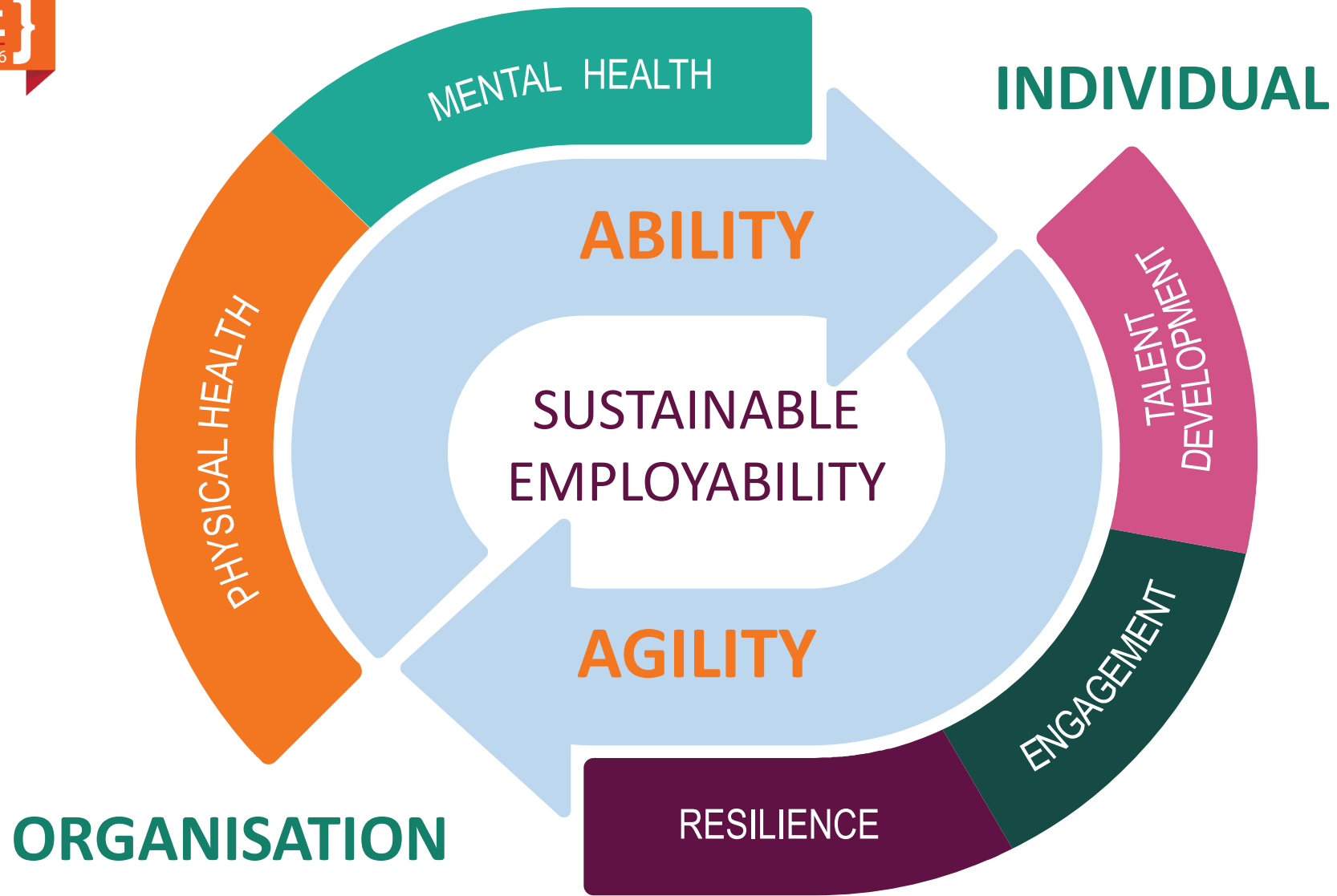




# Securex HR Research







## ● Who?

- Team of 6 Members, with a background in psychology/sociology and mathematics

## ● What?

- Conduct Labour Market Research. Criterium: what is interesting in Belgium when it comes to the labour market?
- Turn-over, absenteeism and sustainable employability as recurring benchmarks



## ● Why?

- Contribute to the brand of Securex
- Putting some topics on the agenda of decision-makers
- Sharing knowledge with other businesses within Securex.